

Functional Requirements v2.1

Julie Verleyen, Yoann Moranville

January 8, 2009

Contents

1	Introduction	3
1.1	Document purpose and organization	4
1.2	Characteristics of this version	4
1.3	Abbreviations	4
2	General organization of the site	5
3	Home	9
3.1	Search (H-S)	10
3.1.1	Keyword search	10
3.1.2	Virtual keyboard	10
3.1.3	Collections	12
3.1.4	Advanced search	12
3.2	Results (H-R)	14
3.2.1	Presentation	14
3.2.2	Records	17
3.2.3	Brief records	17
3.2.4	Full record	18
3.2.5	Search refinement, services and options	21
a.	Search refinement	21
b.	Options	22
c.	Quick links	23
d.	Linking services: services OpenURL compliant	23
3.2.6	History and favourites (H-H and H-F)	24
a.	History (H-H)	24
b.	Favourites	24
4	Mini Searchbox	26
5	Collections	28
5.1	Browse all the collections (C-BA)	29
5.2	Search collections by descriptions (C-S)	29
5.3	Browse collections by subject (C-BS)	30
5.4	Search collections by material (C-SM)	30
6	Libraries	31
6.1	National libraries of Europe (L)	32

7 Organisation	33
8 Footer	37
9 Portal: URL accessibility	39
10 User registration	42
11 Handbook editors	45
11.1 Translation editor	46
11.2 Collection descriptions editor	46
11.2.1 Regular way	47
a. Add a new collection	47
b. Edit the selected collection	48
11.2.2 Special way: Only used by the account manager (and of course the Administrator)	49
12 Administration tools	50
12.1 Promotion of users	51
12.2 News management section	51
12.3 Addition of new translation tags	51
12.4 Maintenance messages	51
12.5 Quick collection descriptions editor	52
12.6 Translation rollback functionality	52
12.7 Maintenance Interceptor	52
12.8 Database quick modifications - Static modifications	52
13 Translation	53
14 Navigation	55
15 Help - Assistance	57
16 Browser compatibility	59

Chapter 1

Introduction

1.1 Document purpose and organization

This document describes the functional requirements of The European Library website version 2.1. It is meant to support the elaboration of the test book. The requirements cover the following aspects:

- presentation
- functionalities
- sequence of events
- systems compatibility

Each requirement is labeled with a number used for identification and reference. This first version will include all requirements for v2.0 - The label will be [\[2.0.1\]](#), [\[2.0.2\]](#)...

All next releases will see their specific requirements be indented with a prefix.

The label for the requirements of v2.1 are [\[2.1.1\]](#), [\[2.1.2\]](#)...

1.2 Characteristics of this version

- New functionalities/features are prefixed with [+]
- Lost functionalities/features are prefixed with [-]
- Functionalities/features that are neither new or lost but just different are prefixed with [+/-]
- Pages where changes apply are indicated as well between brackets

[+] **[Results]** When clicking on the "Send Email" button, a form opens instead of opening the mail client.

[+/-] **[Results]** The list of collections on the left side of the page is now by alphabetical order.

[+] **[Collections - Browse all]** The list is now alphabetically ordered, from top to bottom and left to right. It is as well reformatted to be well ordered with any language.

[+] **[Handbook]** New pages have been introduced for Collection descriptions edition and translation edition.

[+] **[Administration]** More functionalities have been introduced in an administration page.

[+] **[none]** Warning emails for target problems is introduced.

1.3 Abbreviations

TEL = The European Library

TEL AP = TEL Application Profile

Chapter 2

General organization of the site

[2.0.1] The website is accessible through Web address <http://www.theeuropeanlibrary.org> or <http://search.theeuropeanli>
It contains 5 main sections:

- HOME

This section hosts the searching, browsing and services linking functionalities at object level:

- Simple and advanced search
- Virtual keyboard covering character sets of all partners
- Presentation, browsing and saving of results
- Search history
- Linking to external services

- COLLECTIONS

This section hosts the searching and browsing functionalities at collection level:

- Searching of collections by subject, keyword, material, etc. . .
- Browsing of all collections
- Selection of collections for search

- LIBRARIES

This section provides information about all national libraries of Europe members of [CENL](#): address, opening hours, history, contact, etc. . . It is also a showroom where libraries expose their treasures and can hold virtual exhibitions.

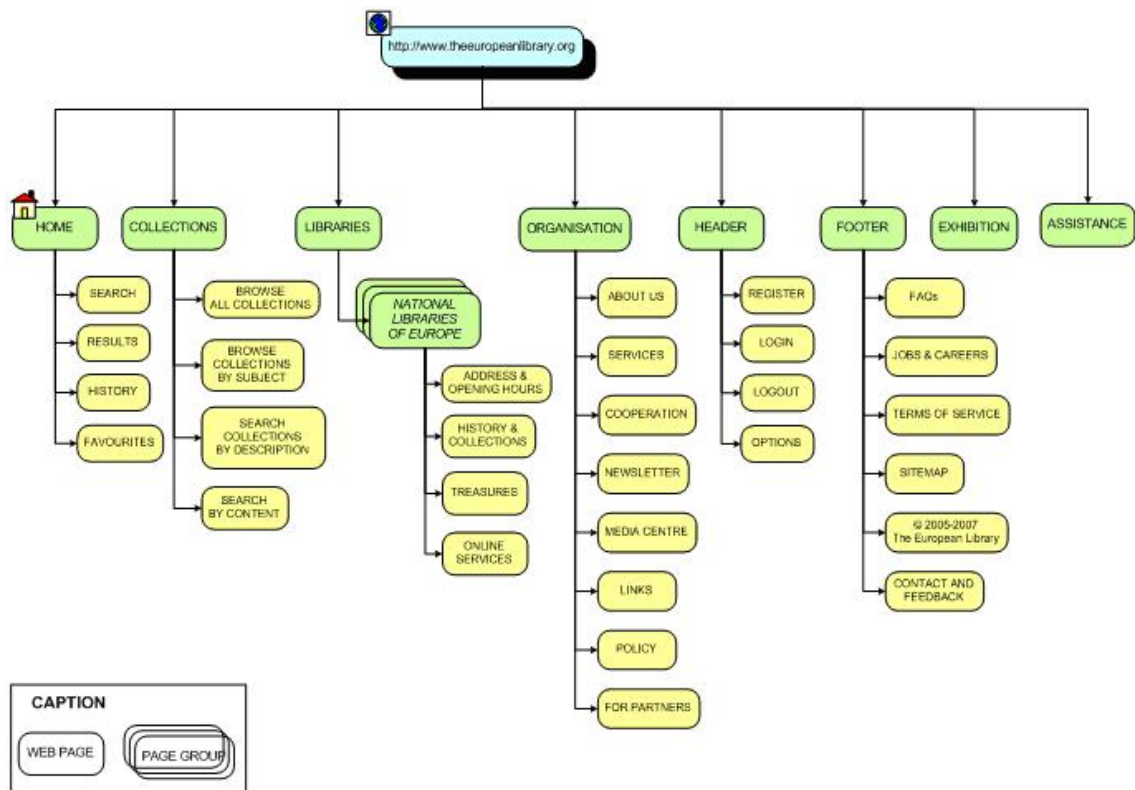
- ORGANISATION

This section provides information about The European Library. It has several purposes; inform 1st time visitors about The European Library, circulate information about and to partners, finally redirect visitors into the portal by highlighting the core activity of The European Library (access to national libraries collections) and by highlighting the partnership level through LIBRARIES pages.

[2.0.2] ~~General Map of the site is as follows:~~

[2.1.1] New general Map of the site is as follows:

Page	Abbreviation
HOME Search Results History Favourites	H-S H-R H-H H-F
COLLECTIONS Browse all collections Browse collections by subject Search collections by description Search by material	C-BA C-BS C-S C-SM
LIBRARIES The national libraries of Europe Address & Opening hours History & Collections 7 Treasures Online services	L
ORGANISATION About us Services Cooperation Media Center Links For partners	O-AU O-S O-C O-MC O-L O-FP
EXHIBITION SPACE Buildings Treasures	ES ES-B ES-T
HELP - ASSISTANCE	A
<i>Header</i> Register Login Logout Options Administration Handbook Translation editor Collection Description editor	H-HT H-HC
<i>Footer</i> FAQ's Jobs & Careers Terms of service Sitemap Contact & Feedback © 2005-2008 The European Library	



Chapter 3

Home

3.1 Search (H-S)

[2.0.3] H-S is the homepage of the site.

3.1.1 Keyword search

[2.0.4] The input field is initially empty.

[2.0.5] The query is entered in the input field.

[2.0.6] A simple search is a keyword search.

[2.0.7] Searching for an empty string is not allowed: if the user attempts to do so a visual sign indicates that the action is not permitted.

[2.0.8] The query is by default encoded in UTF-8 except if the description of the collection specifies it otherwise.

[2.0.9] When the user clicks on the *SEARCH* button associated with the simple search input field:

- Search terms are normalized according to the rules specified in appendix 5 (page 66)
- The CQL query sent to the targets is built as the following: ("*search terms*")
- The search is launched across the selected targets (collections)
- H-R is displayed

[2.0.10] A "Exhibition" item is displayed on the page

[2.0.11] A "Video Tutorial" item is displayed on the page

[2.0.12] A "News" item is randomly displayed each time the page H-S is entered

3.1.2 Virtual keyboard

[2.0.13] Clicking on the link "Virtual keyboard" displays the virtual keyboard. Clicking on the link again would hide the virtual keyboard.

Pressing on the key "Select Layout" shows a list of languages enabling the user to chose the keyboard's layout specific to the selected language.

The virtual keyboard supports layouts as follows (Ref.: <http://codeproject.com/jscript/jvk.asp>):

Language	Layout index in the IBM Globalization database
English (US International)	103P
Canadian (multilingual standard)	taken from Wikipedia article on keyboard layouts
German	129
French	189
Spanish	173
Italian	142
Russian	443
Czech	243
Greek	319
Hebrew	212
Bulgarian	442
Czech	alternative variant of Bohemica.com
Danish	159
Dutch	143
Estonian	454
Finnish	153
Hungarian	208
Icelandic	197
Latvian	455
Lithuanian	456
Macedonian	449
Norwegian	155
Polish	214
Portuguese	163
Romanian	446
Serbian	450 (cyrillic script)
Serbo-Croatian / Slovene	234 (latin script)
Slovak	245
Swedish	285
Ukrainian	465

The default keyboard layout corresponds to the selected interface language. For ex: English interface will trigger the keyboard layout "US international".

[Information about the different keyboard layout: http://en.wikipedia.org/wiki/Keyboard_layout]

For some layouts pressing a key with a diacritical mark enables only the keys of characters combined with this diacritical mark (other keys are disabled except "Caps", "Shift" and "AltGr"). Ex: Press "^" on keyboard with French layout enables keys "â", "ê", "ÿ", "û", "î", "ô", "s", "g", "h", "j", "w", "c", "Caps", "Shift" and "AltGr". Pressing again on the key with diacritical mark enables back all the keys previously disabled (see layout indexes in the [IBM Globalization database](#) for the key combinations to be supported for each layout).

[2.0.14] Clicking on a key or a combination of keys enters the corresponding character into the input field at the cursor's position.

[2.0.15] If the cursor is not positioned in the field then the letter is added at the end of the field.

3.1.3 Collections

[2.0.16] Sets of pre-selected collections are presented below the search input field. Each set is labeled with a theme and has a checkbox.

List of themes:

- Catalogue from national libraries
- Digital collections
- Audio and printed music
- Images
- Manuscripts
- Maps
- Journals
- Children's literature
- Theses and dissertations

[2.0.17] Another "theme" added corresponds to the personal selection made by the user. This is any type of collection selection that was last made on pages C-BA, C-BS, C-S.

If no personal selection of collections has been made, then that theme is disabled.

[2.0.18] Collections of a specific country can be browsed by picking up a country from a select list.

[2.0.19] The theme "all collections from" allows the user to select all collections of a country picked up from a select list of countries.

[2.0.20] More than one theme are selectable for a search.

[2.0.21] The user is invited to go to the COLLECTION section to change the collections selection with links to C-BA, C-BS and C-S.

3.1.4 Advanced search

[2.0.22] Clicking on the "Advanced search" displays the advanced search form. Clicking then on "Simple search" hides the advanced search form.

[2.0.23] The user can specify in which index field the entered term will be searched.

[2.0.24] The initial state of the form to enter a query is the following: 4 empty input fields for specifying the values for the indexes "Any field", "Title", "Author" and "Subject" combined with the Boolean "AND".

[2.0.25] Terms are searched in the chose field with the relation **all** as the following:

(Index_field all "search_terms")

[2.0.26] The terms specified for each field can be combined with the Boolean operators **AND**, **OR** or **NOT** as follows:

(Index_field1 all "search_terms1") AND (Index_field2 all "search_terms2") OR (Index_field3 all "search_terms3")

[2.0.27] The table below lists all the index fields available to search (listed in a dropdown list) and the corresponding CQL:

Index fields	CQL
Any field	"search terms"
Title	title all "search terms"
Creator	creator all "search terms"
Subject	subject all "search terms"
Type	type all "search terms"
Language	language all "search terms"
ISBN	isbn all "search terms"
ISSN	issn all "search terms"

Ex 1:

The CQL query resulting is: *(subject all "biology") and (title all "cells") not (type all "images")*

Ex 2:

The CQL query resulting is: *("schostakovitch sonata" not creator all "schostakovitch")*

[2.0.28] A list of values (controlled vocabularies) is possibly proposed to search some indexes. When such indexes are selected, the input field changes into a dropdown list of available values. The table below shows the indexes with controlled vocabularies:

Index fields	Source	Controlled values ¹
Type	DCMI Type Vocabulary	Text ² Still image Moving image Sound Interactive resource Physical object Software
Language	ISO639-2	3 letters-based language codes of the partners' languages (see appendix 1 - page 62). Ex: "fre" for "French", "por" for "Portuguese", etc ...

[2.0.29] Searching only in "Any field" is equal to a simple search (keyboard search):

Ex 1:

The screenshot shows a search interface with a main search bar containing the text 'ancient egypt' and a dropdown menu set to 'Any field'. Below this are three rows of advanced search criteria, each with an 'and' operator dropdown, a field dropdown, and an empty text input field. The field dropdowns are set to 'Title', 'Author', and 'Subject' respectively.

The CQL query sent is: (*"ancient egypt"*)

Ex 2:

The screenshot shows a search interface where the main search bar contains 'ONU' and the dropdown is 'Any field'. Below it, the first advanced search row has an 'and' operator, a dropdown set to 'Any field', and the text 'european institutions'. The other two advanced search rows (Author and Subject) are empty.

The CQL query sent is: (*"ONU european institutions"*) because a simple search is an AND combination of the query terms.

[2.0.30] Searching for an empty query is not allowed: if the user attempts to do so, a visual sign indicates that the action is not permitted.

[2.0.31] A button enables the user to reset the form to its initial state.

[2.0.32] When the user clicks on the *SEARCH* button associated with the advanced search form:

- The query is normalized according to the rules specified in appendix 5 (page 66)
- The CQL query (see previous requirements) to be sent to the targets by the portal is built
- The search is launched across the selected targets (collections)
- H-R is displayed

3.2 Results (H-R)

3.2.1 Presentation

[2.0.33] The list of searched targets is displayed

[2.0.34] There is a visual indication that the search is in process for at least 1 target. The search can

¹Each list of controlled vocabulary contains an option "Other value" enabling the user to enter a free text for the specified index. When the user chooses this option, the dropdown list changes into a text input element where alternative 3 letters-based language codes can be entered.

When the user places the mouse cursor into the input text then the list of 3 letters codes for languages is automatically displayed on the right side of the screen.

Remark: for "language" the value's format should conform to the 3 letters-based codes for languages of the [ISO639-2](#) standard.

²Only part of the DCMI Type values is used (excluded ²values: Collection, Service, Dataset, Event) because they are the most likely to be used for the time being

be stopped with a mouse's action

[2.0.35] The status of the search is indicated for each target's name

[2.0.36] As soon as a result is returned for the 1st target of the list it is displayed

[2.0.37] Actions that can be done while a search is processed and consequences:

Action performed while a search request is processed	Consequences
Clicking on "SEARCH" button...	...interrupts the current search and launches a new one if a query has been entered
Mouse action to stop the search...	...stops the search
Clicking on a target for which the search is still in process...	...displays a message notifying that the results are not yet received
Clicking on a target for which the number (of hits) is displayed...	...displays the target's results

[2.0.38] Clicking on a collection's name displays the result of the search for this collection.

[2.0.39] Result displayed according to the search status for a given collection:

Search status	Meaning	Result displayed when click on target's name
Image: Spinner	Search still in process for the target	Suitable message is displayed
Number	Number of hits obtained for the target	List of records (short display or full display)
"Aborted"	The search was interrupted before any results were obtained for the target (user stopped the search)	Suitable message is displayed
"Not responding"	SRU Server unavailable (HTTP error 404) or SRU response returned by server contains an invalid character (causes an error in Internet Explorer)	A message is displayed: SORRY! NO RESULT CAN BE DISPLAYED An error has occurred due to one of the following reasons: - The server where this collection is held is not responding. Please try to search this collection again later - An invalid character was found in text content of the response. The European library office is in contact with the library partner to solve the problem.

<p>Error reported by SRU server Diagnostic code # 1</p> <p>(General diagnostics)</p>	<p>A message is displayed: Sorry! An error was returned by the server of this collection. . .</p> <p>A problem occurred: an error message was returned by the library server where this collection is held.</p> <p>More specific details about the problem are unfortunately not available.</p> <p>Please try another query or re-try the same query later.</p>
<p>Error reported by SRU server Diagnostic code # 2</p> <p>(General diagnostics)</p>	<p>A message is displayed Sorry! An error was returned by the server of this collection. . .</p> <p>This collection is temporary unavailable.</p> <p>Please try searching it later.</p>
<p>Error reported by SRU server Diagnostic code # 4 to # 8</p> <p>(General diagnostics)</p>	<p>A message is displayed Sorry! An error was returned by the server of this collection. . .</p> <p>There is a problem connecting with the library server where this collection is held: COMMUNICATION PARAMETER(S) ARE NOT SUPPLIED AND/OR SUPPORTED.</p> <p>The European Library office will contact the library to solve the problem. Please try to search this collection later.</p>
<p>Error reported by SRU server Diagnostic code # 10 to # 49</p> <p>(Category Diagnostics relating to CQL)</p>	<p>A message is displayed Sorry! An error was returned by the server of this collection. . .</p> <p>The library server for this collection doesn't accept your query due to: SYNTAX ERROR.</p> <p>Please refer to the specifications of the query language rules expected by the target system (CQL: Common Query Language)</p>
<p>Error reported by SRU server Diagnostic code # 50 to # 60</p> <p>(Category Diagnostics relating to Result-sets)</p>	<p>A message is displayed Sorry! An error was returned by the server of this collection. . .</p> <p>There is a problem connecting with the library server where this collection is held: THE SET OF RESULTS REQUIRED CANNOT BE PROVIDED</p>

		The European library is aware of this problem and has contacted the library concerned. Please try to search this collection later.
	Error reported by SRU server Diagnostic code # 61 to # 74 (Category Diagnostics relating to records)	A message is displayed Sorry! An error was returned by the server of this collection. . . There is a problem connecting with the library server where this collection is held: THE RECORDS CANNOT BE PROVIDED. The European library is aware of this problem and has contacted the library concerned. Please try to search this collection later.

[2.1.2] When one or more collections are giving back an error or a diagnostic message, the error is logged and an email is sent to the developer team. An email is sent at the maximum rate of "An e-mail per 30 minutes". If there haven't been any problems in the last 30 minutes then no email is issued.

[2.0.40] A simple search can be launched from the results' page (H-R)

[2.0.41] The input field to enter a query is initially empty

[2.0.42] 2 radio buttons enable the user to refine a search:

- When first radio button is checked: the query produced is an AND combination with the query newly entered and the previous search query if the latter exists.
- When second radio button is checked: the query produced is a NOT combination with the query newly entered and the previous search query if the latter exists.

[2.0.43] When the user clicks on the *SEARCH* button:

- The query is normalized according to the rules specified in appendix 5 (page 66)
- The search is launched across the targets (collections) selected by default or selected by the user

[2.0.44] A link to the advanced search form on H-S is available

[2.0.45] A link to the collections selection section C-BA is available

3.2.2 Records

[2.0.46] When hits are obtained a list of brief records is displayed. Clicking on a record's title displays the full record.

3.2.3 Brief records

[2.0.47] The maximum number of brief records displayed in the list is 10

[2.0.48] For each record the following information is shown according to the metadata received from the target (metadata are referenced in The European Library Application Profile for Objects, see [The European Library Metadata Handbook](#)):

Information	TEL AP Metadata
Title	dc:title
Author(s) and co-author(s)	dc:creator
Type(s)	dc:type
Language(s)	dc:language
Link "See online" to an electronic copy of the document (article in PDF, digitized books, audio record, web page...)	dc:identifier with encoding scheme URL or URI
Thumbnail of the image	tel:thumbnail with encoding scheme URL or URI

[2.0.49] Navigation links enable the user to browse the 10 previous and the 10 next records.

[2.0.50] The links are activated only if applicable:

- Link to browse the next 10 records is activated if: position of 10th record < number of hits
- Link to browse the previous 10 records is activated if: position of 1st record (of current page) > 10

[2.0.51] Navigation through the result set launches a search for the next or the previous 10 records: there is a visual sign on the left side of the page indicating that a search is in process.

[2.0.52] User can jump to any page of the result set by entering the page number in an input field and clicking on a validation button. For example, if the number 3 is entered then the 10 records starting at position $3 * 10 = 30$ (if applicable) will be retrieved and displayed.

Input field and button are only activated if there are more than 10 records to browse through.

[2.0.53] If the user validates a jump action without having entered a page number then a visual sign indicates that the action is not permitted.

[2.0.54] If the user validates a jump action after having entered a page number which is greater than the number of pages available for a given result set then the maximal page number possible is automatically displayed in the input field.

[2.0.55] Print link is enabled and would display a page printer friendly ready to be printed will all records on the page. With as many in full view as wanted.

3.2.4 Full record

[2.0.56] The full displays shows all the metadata available for a record.

[2.0.57] Each metadata value appears under a name which is a translated label of the TEL AP element, ex: "Spatial coverage" for <dcterms:spatial>, "Author" for <dc:creator>.

[2.0.58] If the metadata value is an URL the portal performs a meaningful presentation or interpretation of the link like the display of the object's icon when <tel::thumbnail> is present, or the display of a "See Online" message for <dc:identifier> with the appropriate scheme.

[2.0.59] Multiple values for the same metadata field are listed under the same label.

[2.0.60] The table below shows the presentation order of the metadata and the portal interpretation of the elements as a label or an image [A test collection with 1 record containing all fields described in the table can be selected and searched using the URL parameters: /portal/en/search/collections/test/test.query. The record is also to be seen in the appendix (page 67)]:

#	Term	Label ³ / Image
1	<tel:thumbnail xsi:type="dcterms:URL"> <tel:thumbnail xsi:type="dcterms:URI">	
2	<dc:identifier xsi:type="dcterms:URL"> <dc:identifier xsi:type="dcterms:URI">	See Online ⁴
3	<tel:recordId xsi:type="dcterms:URI">	Available at library ⁵
4	<dc:type> all encoding schemes	Type
5	<dc:creator>	Author
6	<dc:title>	Title
7	<dcterms:alternative>	Alternative title
8	<dc:contributor>	Contributor
9	<dc:date>	Date
10	<dc:date xsi:type="ISO8601">	Date ISO8601
11	<dcterms:created>	Created
12	<dcterms:created xsi:type="tel:ISO8601">	Created ISO8601
13	<dcterms:issued>	Issued
14	<dcterms:issued xsi:type="tel:ISO8601">	Issued ISO8601
15	<dcterms:dateAccepted>	Date accepted
16	<dcterms:dateAccepted xsi:type="tel:ISO8601">	Date accepted ISO8601
17	<dcterms:dateSubmitted>	Date submitted
18	<dcterms:dateSubmitted xsi:type="tel:ISO8601">	Date submitted ISO8601
19	<mods:dateCaptured>	Date captured
20	<mods:dateCaptured xsi:type="tel:ISO8601">	Date captures ISO8601
21	<dcterms:modified>	Modified
22	<dcterms:modified xsi:type="tel:ISO8601">	Modified ISO8601
23	<dc:subject xsi:type="dcterms:LCSH">	LCSH - Subject
24	<dc:subject xsi:type="dcterms:MeSH">	MeSH - Subject
25	<dc:subject>	Subject
26	<dc:coverage>	Coverage
27	<dcterms:spatial>	Spatial coverage
28	<dcterms:temporal>	Temporal coverage
29	<mods:edition>	Edition
30	<dc:language> all encoding schemes?	Language
31	<dc:publisher>	Publisher
32	<dc:format> all encoding schemes?	Format
33	<dcterms:hasFormat>	Has format

34	<dcterms:isFormatOf>	Is format of
35	<dcterms:isFormatOf xsi:type="dcterms:URI">	Is format of (URI)
36	<dc:terms hasPart>	Has part
37	<dcterms:extent>	Extent
38	<dcterms:medium> all encoding schemes?	Medium
39	<dcterms:requires>	Requires
40	<dc:description> all encoding schemes	Description
41	<dcterms:abstract>	Abstract
42	<dcterms:tableOfContent>	Table of contents
43	<dc:audience>	Audience
44	<dcterms:conformsTo>	Conforms to
45	<dc:relation>	Relation
46	???	Part of
47	<dcterms:isPartOf> all encoding schemes	Is part of
48	<dcterms:isVersionOf>	Is version of
49	<dcterms:isVersionOf xsi:type="dcterms:URI">	Is version of (URI)
50	<dcterms:replaces>	Replaces
51	<dcterms:replaces xsi:type="dcterms:URI">	Replaces (URI)
52	<dcterms:isReplacedBy>	Is replaced by
53	<dcterms:isReplacedBy xsi:type="dcterms:URI">	Is replaced by (URI)
54	<dcterms:references>	References
55	<dc:source>	Source
56	<dc:bibliographicCitation xsi:type="tel:citation">	Bibliographic citation
57	<dc:identifier xsi:type="dcterms:ISBN"> <dc:identifier xsi:type="tel:ISBN">	ISBN
58	<dc:identifier xsi:type="dcterms:ISSN"> <dc:identifier xsi:type="tel:ISSN">	ISSN
59	<dc:identifier xsi:type="tel:OpenURL">	Open URL
60	<dc:identifier xsi:type="tel:DOI">	DOI identifier
61	<dc:identifier xsi:type="tel:URN">	URN identifier
62	<tel:recordId xsi:type="tel:OAI">	OAI identifier
63	<dc:subject xsi:type="dcterms:DDC">	DDC - Subject
64	<dc:subject xsi:type="dcterms:LCC">	LCC - Subject
65	<dc:subject xsi:type="dcterms:UDC">	UDC - Subject
66	<mods:location>	Location
67	<dcterms:available>	Available
68	<dcterms:available xsi:type="tel:ISO8601">	Available ISO8601
69	<dcterms:valid>	Valid

70	<dcterms:valid xsi:type="tel:ISO8601">	Valid ISO8601
71	<dcterms:dateCopyrighted>	Date copyrighted
72	<dcterms:dateCopyrighted xsi:type="tel:ISO8601">	Date copyrighted ISO8601
73	<dc:rights>	Rights
74	<dc:rights xsi:type="dcterms:URI">	Rights URI
75	<tel:recordSchema>	Record schema
76	<dcterms:temporal xsi:type="dcterms:period">	Period
77	<dcterms:isReferencedBy>	Is referenced by
78	<tel:recordId>	Orig. record
79	<tel:collectionType>	Collection type
80	<cld:strength>	Strength
81	<cld:accessControl>	Access control
82	<cld:accrualStatus>	Accrual status
83	<cld:legalStatus>	Legal status
84	<cld:custodialHistory>	Custodial history
85	<cld:note>	Note
86	<cld:hasLocation xsi:type="dcterms:URI">	Has location
87	<cld:objectName>	Object name
88	<cld:accumulationDateRange>	Accumulation date range
89	<cld:contentsDateRange>	Contents date range
90	<cld:owner>	Owner
91	<cld:hasDescription>	Has description
92	<cld:hasAssociation>	Has association
93	<cld:hasPublication>	Has publication
94	<cld:accessConditions>	Access conditions
95	<cld:isLocationOf xsi:type="dcterms:URI">	Is location of
96	<cld:administrator xsi:type="dcterms:URI">	Administrator
97	<cld:seeAlso xsi:type="dcterms:URI">	See also
98	<cld:locator xsi:type="dcterms:URI">	Locator
99	Other metadata available	Name of metadata term

[2.0.61] By clicking on the title of the full record, the full record view will disappear to only leave the brief record view.

3.2.5 Search refinement, services and options

a. Search refinement

[2.0.62] No search refinement for the moment. . . Service to be reactivated in a later version.

³For the translation of the labels, please refer to [Interface translation maintenance page](#) of The European Library handbook.

⁴"See online" opens up a separate window which links to an electronic copy of the object.

⁵"Available at library" opens up a separate window which links to the record in the local results interface (results page of catalogue/collection native interface).

b. Options

[2.1.3] On the results' page, the user has access to the 2 (or 3) following options:

- Save the record in favourites (see b.):
Once the record is saved, the saving option is disabled for this record. The records saved as favourite record are listed on H-F.
- Send the record by e-mail
- For a very limited number of libraries and according to some constraints (depending on the library), another link can appear. It is related to a project called "eBooks On Demand". So far (as version 2.1), only the national library of Portugal has been implemented with this feature within the TEL portal. See appendix 8 (Page 75) for the constraints in use.

[2.0.63] The option to send the record's reference by email opens up a new message from the local email application with:

[2.1.4] The option to send the record's reference by email opens up a new windows (pop up) with a form and 2 fields and a button as follow:

Field label	Field type	Default value
Your Email	[Text field]	Empty if the user is not logged in Filled with the user's email address if he/she is logged in
Send to	[Text field]	Empty
Send the email	[Button]	[Button]

When everything is correct and well formatted, a click on the button will send an email as stated below:

- Subject: "Reference from The European Library"
- Message (example):

RECORD'S REFERENCE FROM THE EUROPEAN LIBRARY
Please follow the link to see the record:
<http://search.theeuropeanlibrary.org/portal/en/search/collections/a0322/child.query?position=1>
Thank you for using <http://www.TheEuropeanLibrary.org/>

[2.0.64] The email's message contains a link to the full record using the search URL with customized parameters "collections" followed by the identifier of the collection, the query itself followed by ".query" and finally the query string "?position=". Clicking on this link opens a separate window linking to the screen H-R of The European Library with the full display of the record; the selected collection at that moment is the collection from which the record was retrieved.

[2.0.65] User can print H-R with the list of brief records.

c. Quick links

[2.0.66] User has access to a shortcut to view of all collections of a country selected in a list (link to page C-BA where collections of the selected country are listed).

[2.0.67] User can quickly select all collections of a country selected in a list for the next search.

d. Linking services: services OpenURL compliant

[2.0.68] the metadata of the record found in The European Library are used to link to content provider and web services (we call them both "services" in the document) via web pages which are OpenURL compliant ([openURL](#)).

[2.0.69] The web-service are country-dependant (and more precisely national library-dependant), therefore the user has to select a country and get access to a page (separate window) displaying the appropriate service(s). An appendix (page 64) shows the national libraries which have their own OpenURL resolver.

The European Library has its own OpenURL resolver that links to other services.

[2.0.70] The metadata passed as parameters (key-value pairs) to the resolver are ([OpenURL syntax](#)):

- title (1st title in case of several titles) [<dc:title>]
- aulast (1st creator in case of several creator) [<dc:creator>]
- isbn [<dc:identifier xsi:type="tel:ISBN"> or <dc:identifier xsi:type="lib:ISBN">]
- issn [<dc:identifier xsi:type="tel:ISSN"> or <dc:identifier xsi:type="lib:ISSN">]

Example of use of The European library OpenURL resolver:

Metadata retrieved with The European Library portal:

Title	Kollaps : warum Gessellschaften überleben oder untergeher
Author	Diamond, Jared
ISBN	3-10-01 3904-6

OpenURL link using The European Library resolver:

<http://search.theeuropeanlibrary.org/portal/en/telopenurl.html?aulast=Diamond,%20Jared&title=Kollaps%20:%20warum%20Gessellschaften%20überleben%20oder%20untergeher&isbn=3-10-01%203904-6&issn=>

[2.0.71] The address of The European Library's OpenURL resolver is

<http://search.theeuropeanlibrary.org/portal/en/telopenurl.html?>

[2.0.72] The record's metadata are displayed at the top of the resolver's page.

[2.0.73] According to the metadata available [see Appendix page 67], different options to get the object or more information about it are offered under the following categories:

- Bookshops
- Search engines
- Other web services

3.2.6 History and favourites (H-H and H-F)

[2.0.74] A session is the period of time between the moment when the user loads the website in the browser until he leaves it or when the user stays without doing any operations for more than 30 minutes.

a. History (H-H)

[2.0.75] On the history page, two kinds of information are recorded:

- The search queries
- The collection selections

i. Session history

[2.0.76] At the beginning of the session the history is empty (as indicated by appropriate message)

[2.0.77] Each time a search is launched (from H-S, H-R or H-H) the query and the collections selected are recorded in H-H.

[2.0.78] Recorded queries and associated collection selections are numbered in the reversed chronological order (last query at the top of the list).

[2.0.79] Recorded queries are editable and selectable for a new search.

[2.0.80] The collection selection associated with the selected query can be fully re-used (full set of collections) or partially re-used (only one collection of the set can be chosen) for a new search.

[2.0.81] User can launch a new search from H-H with a selected query and collections: this trigger the display of H-R.

[2.0.82] User can reset the history of queries and collection selections to null. The reset option is only available if the history is not empty.

[2.0.83] A user cannot have more than 30 history queries at the same time. When a new search is executed and the number of history queries is > 29, then the oldest one is deleted.

ii. Saved history

[2.0.84] Registered users can save session queries and associated collections selection for later sessions.

[2.0.85] As soon as a registered user is logged the saved queries are displayed on H-H. Both session queries and saved queries are presented on H-H and can be distinguished as such.

[2.0.86] Registered users have access to a saving option for their session queries. Saving a session query deletes it from the session queries' list and adds it to the saved queries' list where the date and time of the saving action is indicated.

[2.0.87] A maximum of 20 queries can be saved for a registered user. If the user tries to save a 21st query then a message appears to indicate that the saving action cannot be performed.

[2.0.88] An option enables users to delete individual saved queries. The user is asked to confirm the deletion.

[2.0.89] Saved queries disappear from H-H when users log out.

b. Favourites**i. Session favourites**

[2.0.90] At the beginning of the session, the favourites list is empty (as indicated by appropriate message).

[2.0.91] Users can bookmark a maximum of 10 records. If the user attempts to bookmark an 11th record, then a message indicates that the action is not permitted and the maximum number allowed.

[2.0.92] Favourite records are numbered in the reversed chronological order (1st row = last favourite).

[2.0.93] The following information is displayed for each favourite records:

- #: number of the bookmarked record
- Brief record's description with the title, the author(s), the document type(s) and language(s)
- Collection from which the record was retrieved
- Library hosting the collection
- Link to an electronic copy of the object if available. Clicking on the link opens up a separate window with the digitized object
- Option to delete the record from the list

[2.0.94] The full view of each favourites record can be requested on H-F.

[2.0.95] User can reset the favourites' list to an empty list. The reset option is only available if the favourites' list is not empty.

ii. Saved favourites

[2.0.96] Registered users can save session favourites for later sessions.

[2.0.97] As soon as a registered user is logged the saved favourites are displayed on H-F. Both session favourites and saved favourites are presented on H-F and can be distinguished as such.

[2.0.98] Registered users have access to a saving option for their session favourites. Saving a session favourites deletes it from the session favourites' list and adds it to the saved favourites' list where the date and time of the saving action is indicated.

[2.0.99] A maximum of 20 favourites can be saved for a registered user. If the user tries to save a 21st favourite then a message appears to indicate that the saving action cannot be performed.

[2.0.100] An option enables users to delete all saved favourites. The user is asked to confirm the deletion.

[2.0.101] Saved favourites disappear from H-F when the user logs out.

Chapter 4

Mini Searchbox

The mini search box is a very simple form that 3rd parties can install on their website to make a simple search in The European Library.

[2.0.102] The collections selected for the search made via the mini search box are:

- The default collections
- The collections from one publisher
- The collections related to one theme

[2.0.103] Users fill in a form to get the code for a TEL mini search box to be included on their website.

[2.0.104] The web-form fields are the following:

Field label	Field type	Default value
Size and color	[Drop-down]	160 x 140 red
Website url	[Text field]	Empty
Email address	[Text field]	Empty
Search collections from	[Drop-down]	Empty
Search collections by theme	[Drop-down]	Empty
Language of portal interface	[Drop-down]	Empty
Reset	[Button]	[Button]
Generate search box	[Button]	[Button]
Display of the code to copy and paste in HTML page	[Text area]	[Script for current mini library]

[2.0.105] User can generate a piece of code with CSS style block on top + text asking not to modify code information like campaign ID.

[2.0.106] An option enables the user to reset the form to its initial state (empty).

[2.0.107] The user has the choice between "Search collections from" or "Search collections by theme". If he chooses both, then a message displays saying that the action is not authorized.

[2.0.108] The following information about who uses the TEL mini search box and how is stored in a database:

Id	URI (Web-site's domain name)	Campaign Id	Language	TEL mini Creation date	Last query date	Query number (incremental)
----	------------------------------	-------------	----------	------------------------	-----------------	----------------------------

Chapter 5

Collections

[2.0.109] Custom selection of collections for the search can be made on C-BA, C-BS and C-SM.

[2.0.110] Searchable collections (description of these collections contain "SRUbaseURL" metadata) are selectable.

[2.0.111] When the user saves the selection the page H-S is displayed. This new selection replaces the previous selection and corresponds to a personal selection as indicated on H-S.

[2.0.112] At least one collection must be selected before saving. If the user attempts to save without having selected a collection, a message indicates that the action is not permitted.

[2.0.113] The performance of the portal depends on the number of selected collections. A warning message is displayed when the user validates the first time the selection of too many collections. If the user persists in validating the same selection a second time, then the search is launched.

5.1 Browse all the collections (C-BA)

[2.0.114] All the collections taken from the collection descriptions are listed per library/institution.

[2.0.115] A maximum of 2 levels of sub-collections are displayed: sub-sub-sub-collections and their sub-collections are not displayed.

[2.0.116] When the URL of the local web interface is available (in the description) it is used to create an hyperlink to reach the collection's page.

5.2 Search collections by descriptions (C-S)

[2.0.117] Here the user 1) searches for collections and 2) select them to search their content.

[2.0.118] The search form is as follow:

Field label	Field type	Default value
Keyword	[Text field]	Empty
Language	[Drop-down]	"-select-"

Fields can be combined with Boolean operators AND, OR and NOT. Operators selected by default for each field:

- Keyword: AND

[2.0.119] Query terms are searched in the selected indexes with the relation **LIKE** *'% ... %'* as follows:

([Index field] LIKE '%[term]%)'

[2.0.120] Query terms specified can be combined with the Boolean operators **AND**, **OR** or **NOT** as follows:

([Index field 1] LIKE '%[term 1]%)' AND ([Index field 2] LIKE '%[term 2]%)'

[2.0.121] The following table shows the query corresponding to each index:

Index	Query
Any field (Keyword)	WHERE (title LIKE '%search terms%') OR (description LIKE '%search terms%')
Language	WHERE (language='search terms')

[2.0.122] Searching for an empty query is not allowed: if the user attempts to do it, a visual sign indicates that the action is not permitted.

[2.0.123] User can launch the search across all collection descriptions for the entered query.

[2.0.124] Retrieved collections are displayed on the same page (C-S).

5.3 Browse collections by subject (C-BS)

[2.0.125] Here the user 1) searches for the collections by browsing a subjects' list and 2) selects the retrieved collections for searching their content.

[2.0.126] The list of subjects covers the first 3 levels of the Dewey Decimal Classification subject headings. The subject headings shown are those which are used in at least 1 collection description.

[2.0.127] The number of collections per subject is indicated for each subject heading.

[2.0.128] Initially, only the 1st level subject headings are displayed.

[2.0.129] User can display or hide the 2nd level subject headings for each 1st level subject.

[2.0.130] Clicking on one subject launches across the collection description for that subject; the retrieved collections are displayed on the same page (C-S).

5.4 Search collections by material (C-SM)

[2.0.131] In this section samples of materials held in the national libraries' collections can be browsed by the user.

[2.0.132] The collections from which the samples are extracted are categorized in themes that can be browsed. On the C-SM page a simple search across all collections corresponding to a theme can be launched by the user.

Chapter 6

Libraries

6.1 National libraries of Europe (L)

[2.0.133] Pages of this section are accessed by selecting the country/place where a national library is located. This selection can be made either via a list of countries/places or via interaction with a geographical representation of the countries/places.

[2.0.134] Once an institution is selected via its geographical location the user accesses the following sections:

- Addresses & opening hours
- History & collections
- Treasures
- Online services (*not implemented yet*)

Chapter 7

Organisation

[2.0.135] Sitemap of this section is as follows:

- ABOUT US (O-AU) [Basic information about the purpose, partners, background and future of The European Library]
 - What is The European library?
 - Who is The European Library for?
 - Who is involved in The European Library?
 - The European Library background
 - The European Library future
 - The European Library office
 - * How to reach The European Library office?
 - * The European Library office members
 - Team members biographies
- SERVICE (O-S) [This section highlights the extra services around the portal (Mini Library, 1st time user guide, faq's, etc...)]
 - 1st time users
 - * User guide
 - * FAQ's
 - FAQ's answers
 - Librarians and experts
 - * Technical information
 - Mini library
 - * Mini library installation
 - * Step by step
 - Other services
- COOPERATION (O-C) [This section promotes running collaborations across the network]
 - FUMAGABA
 - TELPlus
 - DELOS
 - * The European Library and DELOS
 - MICHAEL
 - * The European Library and MICHAEL
 - BRICKS
 - * The European Library and BRICKS
 - Project archive
 - * EDLproject
 - * TEL-ME-MOR

- * TEL Project
- * GABRIEL
- NEWSLETTER (O-N) [This section gives access to the newsletter (current and archives) published by The European Library. The newsletter gives updates about The European Library and satellite projects. This section is NEWS orientated.]
 - Newsletter
 - * Newsletter archive
 - Video corner
 - * Video corner archive
 - In Focus
 - * "In Focus" archive
 - In depth
 - * "In depth" archive
 - In brief
- MEDIA CENTRE (O-MC) [This section is a press centre for partners and The European library, what is written about us, what press releases we have sent around, etc. . . This section is MARKETING orientated.]
 - Announcements
 - Publications
 - * Publications about The European Digital Library
 - * Publications about The European Library
 - * Press releases from The European Library
 - Partner's corner
 - * Publications from Croatia
 - * Publications from Greece
 - * Publications from Slovenia
 - * Publications from The UK
 - * Publications from Serbia
 - * Publications from Germany
 - * Publications from The Netherlands
- LINKS (O-L) [This section provides links to non-commercial organisation. The page has MARKETING purposes.]
 - Links resources
 - Links request
 - Links policy

- POLICY (O-P) [Policy: Every page on the ORGANISATION section refers to the POLICY page in order to mention the language policy applied across the portal and privacy policy that explains what information is collected from visitors when they land on The European Library website.]
 - Language policy
 - Privacy policy
- FOR PARTNERS (O-FP) [Password protected section reserved for internal communication among partners.]

[2.0.136] Subscription to the newsletter can be requested on O-AU, O-S, O-C, O-N, O-MC, O-P and O-L via a form.

[2.0.137] Newsletter subscription form is as follows:

Field label	Field type	Default value
Name	[Text field]	Empty
Institution	[Text field]	Empty
E-mail address	[Text field]	Empty

[2.0.138] Feedback form can be found on a sub-page accessible from O-AU.

[2.0.139] Feedback form is as follows:

Field label	Field type	Default value
Name	[Text field]	Empty
E-mail address	[Text field]	Empty
Feedback	[Text field]	Empty

Chapter 8

Footer

[2.0.140] Footer gives access to:

- FAQ's
- Jobs & Careers
- Terms of service
- Sitemap
- Contact & Feedback
- Policy
- Copyright statement

Chapter 9

Portal: URL accessibility

[2.0.141] The European Library search functionalities are accessible via the normal entry point (home page) but are also accessible via specific URLs. Those possibilities will be explained here.

- /search/{query}.query
 - The {query} will be launched in a default list which is the catalogues from all National Libraries in Europe
 - Example: [http://search.theeuropeanlibrary.org/portal/en/search/\("joe"\).query](http://search.theeuropeanlibrary.org/portal/en/search/()
- /search/collections/{collections}/{query}.query
 - The {query} will be launched in a set of collections defined by the other parameter given by the user: {collections}
 - The {collections} is a list (separated by commas) of collection identifiers, the user will add here all the different identifiers he/she wants to search into.
 - Example: [http://search.theeuropeanlibrary.org/portal/en/search/collections/a0000/\("joe"\).query](http://search.theeuropeanlibrary.org/portal/en/search/collections/a0000/()
- /search/themes/{themes}/{query}.query
 - The {query} will be launched in a set of themes defined by the other parameter given by the user: {themes}
 - The {themes} is a list (separated by commas) of themes used by the portal. The list is accessible in section 3.1.3 (page 12).
 - Example: [http://search.theeuropeanlibrary.org/portal/en/search/themes/images,maps/\("joe"\).query](http://search.theeuropeanlibrary.org/portal/en/search/themes/images,maps/()
- /search/themes/{themes}/collections/{collections}/{query}.query
 - The {query} will be launched in a set of themes and of collections defined by the other parameters given by the user: {themes} and {collections}
 - The {themes} is a list (separated by commas) of themes used by the portal. The list is accessible in section 3.1.3 (page 12).
 - The {collections} is a list (separated by commas) of collection identifiers, the user will add here all the different identifiers he/she wants to search into.
 - Example:
[http://search.theeuropeanlibrary.org/portal/en/search/themes/images/collections/a0000/\("joe"\).query](http://search.theeuropeanlibrary.org/portal/en/search/themes/images/collections/a0000/()
- /search/publisher/{publisher}/{query}.query
 - The {query} will be launched in a set of themes and of collections defined by the other parameters given by the user: {publisher}
 - The {publisher} is a single publisher identifier, the user will add here the acronym of the library he/she wants to search into.
 - Example: [http://search.theeuropeanlibrary.org/portal/en/search/publisher/DNB/a0000/\("joe"\).query](http://search.theeuropeanlibrary.org/portal/en/search/publisher/DNB/a0000/()
- /search/themes/{themes}/publisher/{publisher}/{query}.query
 - The {query} will be launched in a set of themes and of collections defined by the other parameters given by the user: {publisher} and {themes}

-
- The *{publisher}* is a single publisher identifier, the user will add here the acronym of the library he/she wants to search into.
 - The *{themes}* is a list (separated by commas) of themes used by the portal. The list is accessible in section 3.1.3 (page 12).
 - Example:
[http://search.theeuropeanlibrary.org/portal/en/search/themes/images/publisher/DNB/\("joe"\).query](http://search.theeuropeanlibrary.org/portal/en/search/themes/images/publisher/DNB/()
 - /search/publisher/*{publisher}*/collections/*{collections}*/*{query}*.query
 - The *{query}* will be launched in a set of themes and of collections defined by the other parameters given by the user: *{publisher}* and *{collections}*
 - The *{publisher}* is a single publisher identifier, the user will add here the acronym of the library he/she wants to search into.
 - The *{collections}* is a list (separated by commas) of collection identifiers, the user will add here all the different identifiers he/she wants to search into.
 - Example:
[http://search.theeuropeanlibrary.org/portal/en/search/publisher/BnF/collections/a0000/\("joe"\).query](http://search.theeuropeanlibrary.org/portal/en/search/publisher/BnF/collections/a0000/()
 - /search/themes/*{themes}*/publisher/*{publisher}*/collections/*{collections}*/*{query}*.query
 - The *{query}* will be launched in a set of themes and of collections defined by the other parameters given by the user: *{publisher}* , *{collections}* and *{themes}*
 - The *{publisher}* is a single publisher identifier, the user will add here the acronym of the library he/she wants to search into.
 - The *{collections}* is a list (separated by commas) of collection identifiers, the user will add here all the different identifiers he/she wants to search into.
 - The *{themes}* is a list (separated by commas) of themes used by the portal. The list is accessible in section 3.1.3 (page 12).
 - Example:
[http://search.theeuropeanlibrary.org/portal/en/search/themes/images/publisher/DNB/collections/a0000/\("joe"\).query](http://search.theeuropeanlibrary.org/portal/en/search/themes/images/publisher/DNB/collections/a0000/()

As many collections might be in different selection (done by the user), a check is performed to avoid to have the same collection twice in the search.

Chapter 10

User registration

[2.0.142] On any page of the site, the user can access:

- registration page (if the user is not a registered user logged in)
- login page (if the user is not a registered user logged in)
- logout page (if the user is a registered user logged in)
- option page (if the user is a registered user logged in)

[2.0.143] A registered user has the possibility to save queries, collection selections and favourite records.

[2.0.144] Registration form is as follows:

Field name	Field type	Obligation	Edition rules
Username	[Text field]	compulsory	Alpha numerical with at least 3 characters
Password (+ retype Password)	[Text field]	compulsory	Minimum 6 characters and maximum 20. <i>(Recommending at least a capital letter and a numerical digit)</i> . Special characters other than ? ! () [] { } - _ are not accepted
First name	[Text field]	compulsory	Alphanumerical
Last name	[Text field]	compulsory	Alphanumerical
Email (+ retype email)	[Text field]	compulsory	Email format
Country	[Drop-down]	compulsory	
Subject area of interest (up to 5)	[Drop-down]	compulsory	
Place of work / Organisation	[Drop-down]: *University / college *Research institute *Commercial company *Not-for-profit organisation *Government *Library *Private individual *Other	compulsory	
Type of work / occupation	[Drop-down]: *University teacher / professor *High school teacher *Student - Undergraduate	compulsory	

	<ul style="list-style-type: none"> *Student - Postgraduate *Researcher *Professional / Practitioner *Librarian - Administrator *Librarian - Faculty liaison *Librarian - Corporate *Librarian - Other *Media / Journalist *Bookseller *Other 		
Where did you hear about us	<p>[Drop-down]:</p> <ul style="list-style-type: none"> *Link from library catalogue / library website *Link from other website *Search engine *Leaflet / Brochure / Postcard *E-mail promotion *Conference *Recommendation from a colleague *Other 	optional	
Do you wish to receive the newsletter	[Radio buttons] yes-no	optional	
Do you wish to participate in user surveys	[Radio buttons] yes-no	optional	

[2.0.145] After submission and check, an email is sent to the email address provided with a link for the confirmation. When the user clicks on the link, he/she will be sent to a page saying that it has been confirmed.

[2.0.146] If the user haven't confirmed his registration, then the account is not usable.

[2.0.147] The login page contains a form with:

- 1 input field for the username
- 1 input field for the password
- 1 checkbox for the "remember me" functionality
- 1 submit button

In case the password has been forgotten, a new one can be requested by filling in a form with username and e-mail. The new password is sent to the specified e-mail.

[2.0.148] Once the user is logged in, his/her username is displayed. Access to the registration page is not available anymore. Access to the logout functionality is available.

Chapter 11

Handbook editors

[2.1.5] Two new editors are now accessible for editing the interface translations and the collection descriptions. Those 2 editors are accessible from a page called "handbook".

[2.1.6] Those editors are not accessible by anybody. Only the partners and the office members have access to those. They have access to them with the following rules:

- Partners will only have access to the collection descriptions of THEIR library.
- Partners will only have access to the translations of their language.
- Office members (seen as account managers) will only have access to the collection descriptions of the libraries they are responsible for. They won't have access to the translation editor.
- Administrator(s) have access to everything and can publish everything.

More information will be given in the special sections for each editors.

11.1 Translation editor

[2.1.7] From the page "handbook", you can select to go to the translation editor.

[2.1.8] Regarding how the user registered as a Partner (which language has been specified for him/her), you will arrive directly on the translation editor of your own language. You won't be able to change that language.

[2.1.9] The editor is a replication of the old version (used until v2.0 in www.theeuropeanlibrary.org/handbook/). You will see a big table with 4 main columns (appearing here on the left hand-side of the table):

Tag Name	The name of the tag, as used in the templates
English	The current english translation of that term/sentence
Translation	The current translation in the selected language if available, a "MISSING" status if not available
Edit/Add translation	A textarea where the partner can fill in the new or edited translation for this one tag

When the partner is satisfied with its translations, he/she can submit the form (Submit button at the bottom of the file). But first, the partner will need to fill in its name, institution and email address.

[2.1.10] The form is processed, and all information go into the database.

[2.1.11] Between 2 and 7 minutes after the submission, the changes will appear online.

[2.1.12] When a tag is edited (meaning that an old translation was already there), then the old version is saved in another database. We keep all of the old tag translation in the case we need to rollback to an older version. (This functionality is available in the administration tools page).

[2.1.13] Every time a submission of this form is done, emails are sent to the partner, to acknowledge reception and informing that the translations will be online very soon (7 minutes maximum) and to the metadata mailbox, just to keep track of what have been submitted by who and when.

11.2 Collection descriptions editor

[2.1.14] This functionality can be used in 2 different ways:

- The normal way: The partner edits or adds a collection description, then submit it.
- The special way: The account manager modifies directly the collection description without letting the partner know.

11.2.1 Regular way

[2.1.15] The partner arrives on a first page where he/she will see all its library collection descriptions (as if they would be displayed in the collections page - C-BA). The partner will be able to modify the language of the page to be able to check the descriptions in other languages.

[2.1.16] At the bottom of the page, 3 submit buttons can be seen.

- The first one "add a new collection" will trigger a new collection to be created and waits for the partners inputs
- The second one "modify a collection" is deactivated by default. To activate it, the partner will need to select one of the radio button (that would see right after the title of a collection). A click on this button would activate the collection description editor to modify one specific collection.
- Cancel button to go back to the handbook page

[2.1.17] When the partner clicks on either "add a new collection" or "modify a collection" button, it will display a new page which is a replication of the actual handbook page. Not 100% the same, but which follows the same logic.

a. Add a new collection

[2.1.18] A "almost blank" collection description editor page will appear, divided in 4 sections:

- The collection core components
 - Update date - non modifiable
 - Identifier - none modifiable
 - Country - non modifiable
 - Publisher - non modifiable
 - Part of default list - non modifiable
 - Theme
 - Collection ItemType
 - Thumbnail
 - IsPartOf
 - DCMI Type
- The collection content components (titles and descriptions in all different languages)
 - Title
 - Description
- The collection search components

- SRU base URL
- SRU - full format of metadata
- The collection harvest components
 - OAI base URL
- The rest (in collection multi) of the components

The partner will need to fill in all the required information, and add as much information as he/she can.

[2.1.19] When everything is filled and accepted, the partner can click on the button "Next" to save its collection description.

[2.1.20] Once the partner has confirmed its selection, 2 emails are sent:

- One to the partner saying that the collection description has been saved and is on hold until the account manager acknowledge it and sends it to the live website.
- One to the account manager, warning him/her that a new collection description has been submitted, and that he/she should check it and allow (or not) the collection to go live (we will come back to this point).

The new collection description is on hold for as long as necessary, until the account manager decides for it to go live.

[2.1.21] The partner just has to wait until the collection goes live... He can of course still modify it in order to add new information, . . .

[2.1.22] The account manager which receives the email, will then need to go to the same place "H-HC", and select the collection which is on hold (a message warns him/her which collection description are currently on hold). He/she will need to select it, click on "Edit the collection selected" and finally, after checking (and eventually modifying) the collection description, will "PUBLISH the collection description". The collection description then becomes viewable on the live website.

[2.1.23] Once the account manager allowed the collection description to be live, an email will warn the partner that his/her collection is now viewable on the live website.

[2.1.24] If a thumbnail is added by the partner and that this thumbnail is not located on the TEL server, then an email is sent to TEL Tech team to warn them about it (it is much safer to have all the thumbnails on our server - for performance).

[2.1.25] If a title and/or description in English is modified, then an email is send to the TEL team to let them know that they might (and probably need) to update as well the translations of this collections (Transibar was the translating company used by TEL at the time of writing this document)

b. Edit the selected collection

[2.1.26] In the same way as the previous section, the partner can modify one of its collection description and the same emails, interactions will occur.

- Modifications, and click on the "next" button
- 2 emails sent to partner + account manager
- Account manager decides on the possibility to put the collection live
- An email is sent to the partner to tell him/her that the collection is live (if the account manager decided so)

11.2.2 Special way: Only used by the account manager (and of course the Administrator)

[2.1.27] If the account manager of a library decides that a modification need to be done on one collection description, then he/she have the possibility to do so. After that it has been sent to the live website, the partner will anyway be notified by email that one of his/her collection has been modified and is now live.

[2.1.28] The administrator can do this on any collection of any library.

Chapter 12

Administration tools

[2.1.29] The section will explain and describe the new section called "Administration".

[2.1.30] It concerns only the administrator(s) and some office members with special rights (i.e. Editorial team).

[2.1.31] This section is divided in 4 different parts:

- Normal (or default) view:
 - Promotion of users to become partners
 - News management section (that the editorial team will have access to)
 - Addition of a new translation tag in the Database (with its English translation)
 - Maintenance message management
- Collection quick editor
- Translation rollback functionality
- Maintenance Interceptor switch (+ database modification links)

All different functionalities will be described here.

12.1 Promotion of users

[2.1.32] Users that are entitled to be promoted to the rank of partners (between 25 and 70 usernames) can request it to the TEL team. Once a username is requested to become a partner, it has to be accepted by the TEL Office, and then they own new rights on the web site. A form is accessible to the administrator(s) to give them the right to modify a user profile in order to provide new rights to somebody.

12.2 News management section

[2.1.33] Another form is accessible to add / modify news on the website (as seen on the H-S lower left side). This functionality is accessible for the administrator(s) and the TEL editorial team. A maximum of 5 different news are accepted, all new news would be un-activated unless an old news would be discarded (erased).

12.3 Addition of new translation tags

[2.1.34] An administrator has now the possibility to add a new tag in the database. By new tag, we mean a new translation tag that can be used in any pages, via the freemarker templates (which results in an html page once processed). He/she will need to add the name of the tag and the english translation of course.

12.4 Maintenance messages

[2.1.35] Once in a while, maintenance messages need to be put on the website to prevent the user that one (or more) collection(s) is(are) not accessible for any reason. This form permits this in an easy way.

12.5 Quick collection descriptions editor

[2.1.36] A quick collection editor has been created as well, to help for quick maintenance over the collections. The possibilities aren't much, but helps a lot. And administrator can put a collection live, or not, make one searchable or even add (or remove) one collection from the default list.

12.6 Translation rollback functionality

[2.1.37] Another form accessible is to allow an administrator to rollback to older submitted translations from the handbook. If a partner submitted wrong translations and we hear from that, then we might be able to rollback to the previous versions (that were previously submitted).

12.7 Maintenance Interceptor

[2.1.38] The last administrative tool, but not least is the Maintenance interceptor switch. When activated, anyone arriving on the website would be redirected to a special page with an understandable message, announcing that the website is under maintenance and can't be reached at the moment. Only the login page is accessible. An administrator logged in can go on any pages (to help to check if everything is fine before coming back to a normal mode).

12.8 Database quick modifications - Static modifications

[2.1.39] Finally, some links are hard coded on this page, allowing the administrator to reset the database (by steps), only users, or all translations (reading from an old used xml file), or even the collection description pages.

Chapter 13

Translation

[2.0.149] The language of the portal's interface is set to the user's locale (if it is one of the available language) when the portal is loaded in the user's browser at first. If the language doesn't exist in the portal, the default language is English.

[2.0.150] The translation of the portal's interface is available in the languages of the full participant libraries/institutions.

[2.0.151] The metadata retrieved are presented in the portal are not translated. If same metadata values in different languages are available (ex: 1 abstract in English and 1 in German) then they are all displayed. However the metadata labels are translated (title, author, etc. . .).

[2.0.152] Help texts are translated in the selected language.

[2.0.153] On any page of the site a dropdown list of languages allows the user to change the interface's language. The navigation from one page to another keeps the language selection in the whole site.

[2.0.154] COLLECTIONS section: if the information taken from the collection descriptions (title + description) is available in the language selected by the user then it is displayed in the language otherwise it is displayed in English.

Chapter 14

Navigation

[2.0.155] From the moment the user enters the website until he leaves it (in 1 same browser window) the last actions and modifications of the portal's interface are kept in place, wherever the user is navigating in the pages within the website.

Ex: On H-R: the collections selection was modified one or several times and one or several searches were made and the results of one given collection are displayed: if the user goes to LIBRARIES or TREASURES, for ex., and then to a) H-S: the last entered query is still present in the input field if it was entered in H-S; b) H-R: the last entered query is still present in the input field if it was entered in H-R and the results are displayed the same as when the user left them for another page of the site.

Chapter 15

Help - Assistance

[2.0.156] This section is available from any page of the website and is presented in a separate window. It provides access to explanation and help about the site and how to use it as well as answers to FAQs (Frequently Asked Questions). Information in the HELP - ASSISTANCE section can be found with browsing (table of content, index) and searching facilities.

[2.0.157] When pages of HELP - ASSISTANCE are available in different languages user can have access to them at page level.

Chapter 16

Browser compatibility

[2.0.158] The portal is compatible with all browsers with JavaScript support.

Appendix

Appendix 1: Languages of The European Library participants

English Name of Language	ISO639-2	ISO639-1
Alemaní	gsw	
Croatian	scr/hrv	hr
Czech	cze/ces	cs
Danish	dan	da
Dutch	dut/nld	nl
English	eng	en
Estonian	est	et
Finnish	fin	fi
French	fre/fra	fr
German	ger/deu	de
Greek, Modern (1453-)	gre/ell	el
Hungarian	hun	hu
Icelandic	ice/isl	is
Irish	gle	ga
Italian	ita	it
Latvian	lav	lv
Lithuanian	lit	lt
Luxemburgish	ltz	lb
Maltese	mlt	mt
Norwegian	nor	no
Polish	pol	pl
Portuguese	por	pt
Serbian	scc/srp	sr
Slovak	slo/slk	sk
Slovenian	slv	sl
Spanish	spa	es
Swedish	swe	sv

Appendix 2: List of services proposed by The European Library OpenURL resolver by default

Category	Service	Specifications	Metadata linked
Booskhops	Amazon	http://www.amazon.com/exec/obidos/title=	[Title]
		http://www.amazon.com/exec/obidos/author=	[Author]
		http://www.amazon.com/exec/obidos/ISBN=	[ISBN]
	Barnes and Noble	http://www.barnesandnoble.com/search.asp?TTL=	[Title]
		http://www.barnesandnoble.com/search.asp?ATH=	[Author]
		http://www.barnesandnoble.com/search.asp?isbn=	[ISBN]
	Fnac	http://www3.fnac.com/search/quick.do?text=	[Title] or [Author] or [ISBN]
	Decitre	http://www.decitre.fr/recherche/resultat.aspx?criteres=	
	Alapage	http://www.alapage.com/mx/?fulltext=	
	Bookzilla	http://www.bookzilla.de/shop/action/quickSearch?searchString=	
Internet Book-Shop	http://www.internetbookshop.it/ser/serpge.asp?type=keyword&x=		
Search Engines	Google		[Title] or [Author] or [Title + Author] or [ISBN] or [Title + Author + ISBN]
	Google Scholar		
	Google Print		
	Yahoo		
	Altavista		
	MSN search		
Other web-services	deadoralive	deadoraliveinfo	[Author]
	Google Image	Google Image	[Author]
	Wikipedia	Wikipedia	[Title] or [Author] or [ISBN]

Appendix 3: Services OpenURL compliant per country

Country	Library / Institution	Resolver / Service name	URL
Denmark	Det Kongelige Bibliotek	KB Links (SFX OpenURL resolver)	http://sfx.kb.dk/sfx_dk
Hungary	National Széchényi Library	Local OpenURL resolver	http://viola.oszk.hu:8080/sokk/OpenURL_Servlet
Portugal	Biblioteca Nacional	Local OpenURL resolver	http://openurl.bn.pt/resolver
The Netherlands	Koninklijke Bibliotheek	KB services (SFX OpenURL resolver)	http://portal.kb.nl:9003/sfx_local
United Kingdom	British Library	British Library Document Delivery Service	https://www.bl.uk/services/document/lexformn.html
All	The European Library	TEL resolver	http://search.theeuropeanlibrary.org/portal/telopenurl.html

**Appendix 4: Normalization and conversion rules applied to search terms
- NOT DONE**

Appendix 5: Sample of collection selection and queries

Country	Catalogue / collection	Query
Finland	HELKA	Seitsemän Åberg, Gösta
Cyprus	Main Catalogue of Cyprus Library	Οποιοδήποτε επικεφαλίδα Θεματος
Switzerland	Swiss Poster Collection	mönch gruyère
Switzerland	Helveticat	âme
Estonia	Digital Archive DIGAR	põllumehe
Estonia	Online Catalogue of the National Library of Estonia	Kivirähk
Hungary	Amicus – Catalogue of the National Széchényi Library of Hungary	őszirózsás
Hungary	Corvinas of the National Széchényi Library of Hungary	papír
Hungary	Map collection of the National Széchényi Library of Hungary	országok
Hungary	Hungarian National Shared Catalogue	János vitéz
Hungary	Hungarian Electronic Library	Szabó Lőrinc
Hungary	National Digitized Data Archive (NDDA)	kőműves
Germany	Online Catalogue of the German National Library	Böll
Slovenia	KatNUK: the catalogue of the Slovene National and University Library	Čemažar
Portugal	Collections from the National Library of Portugal	conceição
Czech Republic	Union Catalogue of Czech Republic	Foglar řeky
Czech Republic	National Library of Czech Republic	květinářství
Serbia	Serbian Union Catalogue CO-BIB.SR	čičak
United Kingdom	British Library Integrated Catalogue	fantômes

Appendix 6: test record with all metadata fields identified by the portal

```
<record>
  <header>
    <identifier>tel:test:1</identifier>
  </header>
  <metadata>
    <tel:thumbnail xsi:type="dcterms:URI">
      http://www.theeuropeanlibrary.org/portal/images/partnerlogos/TELthumb.gif
    </thumbnail>
    <tel:thumbnail xsi:type="dcterms:URL">
      http://www.theeuropeanlibrary.org/portal/images/partnerlogos/TELthumb.gif
    </thumbnail>
    <dc:identifier xsi:type="dcterms:URI">
      http://www.theeuropeanlibrary.org/portal/images/partnerlogos/TELthumb.gif
    </dc:identifier>
    <tel:recordId xsi:type="dcterms:URI">http://www.theeuropeanlibrary.org</tel:recordId>
    <dc:title xml:lang="de">Once upon a time...</dc:title>
    <dcterms:alternative>Il était une fois...</dcterms:alternative>
    <dc:creator>Mr. Smith</dc:creator>
    <dc:subject>History</dc:subject>
    <dc:subject xsi:type="dcterms:LCSH">Subject [LCSH]</dc:subject>
    <dc:subject xsi:type="dcterms:DDC">Subject [DDC]</dc:subject>
    <dc:subject xsi:type="dcterms:UDC">Subject [UDC]</dc:subject>
    <dc:subject xsi:type="dcterms:MeSH">Subject [MeSH]</dc:subject>
    <dc:format>Format</dc:format>
    <dc:format xsi:type="dcterms:IMT">Format [IMT]</dc:format>
    <dc:type>Image</dc:type>
    <dc:type xsi:type="tel:TEIType">Picture</dc:type>
    <dc:type xsi:type="dcterms:DCMIType">Still image</dc:type>
    <dc:type xsi:type="cld:collType">Collection Type</dc:type>
    <dc:type xsi:type="cld:CollDescType">Collection Description Type</dc:type>
  </metadata>
</record>
```

```

<dc:language>english</dc:language>
<dc:language xsi:type="dcterms:ISO639-2">eng</dc:language>
<dc:language xsi:type="dcterms:RFC1766">Language [RFC1766]</dc:language>
<dc:language xsi:type="dcterms:RFC3066">Language [RFC3066]</dc:language>
<dc:description>This is a beautiful image</dc:description>
<dc:description xsi:type="dc:type:Collection">Description [Collection]</dc:description>
<dc:description xsi:type="dcterms:URI">http://www.theeuropeanlibrary.org</dc:description>
<dc:publisher>TEL</dc:publisher>
<dc:date>23 April 2007</dc:date>
<dc:date xsi:type="tel:ISO8601">2007-04-23</dc:date>
<dcterms:isPartOf>Book of images</dcterms:isPartOf>
<dcterms:isPartOf xsi:type="dcterms:URI">http://www.theeuropeanlibrary.org</dcterms:isPartOf>
<dcterms:isPartOf xsi:type="tel:ISSN">xxxxxxx</dcterms:isPartOf>
<dcterms:isPartOf xsi:type="dc:type:Collection">Collection of beautiful images</dcterms:isPartOf>
<dcterms:hasPart>Image's details</dcterms:hasPart>
<dcterms:hasPart xsi:type="dc:type:Collection">xxxxxx</dcterms:hasPart>
<dcterms:replaces>Old version of the image</dcterms:replaces>
<dcterms:replaces xsi:type="dcterms:URI">http://www.theeuropeanlibrary.org</dcterms:replaces>
<dcterms:isReplacedBy>Newer version of the image</dcterms:isReplacedBy>
<dcterms:isReplacedBy xsi:type="dcterms:URI">
http://www.theeuropeanlibrary.org
</dcterms:isReplacedBy>
<dcterms:references>xxxxxx</dcterms:references>
<dcterms:isVersionOf>xxxxxx</dcterms:isVersionOf>
<dcterms:isVersionOf xsi:type="dcterms:URI">
http://www.theeuropeanlibrary.org
</dcterms:isVersionOf>
<dcterms:conformsTo>Standard ISOxxxxx</dcterms:conformsTo>
<dcterms:requires>PC</dcterms:requires>
<dcterms:hasFormat>70x70 cm</dcterms:hasFormat>
<dcterms:isFormatOf>xxxxxx</dcterms:isFormatOf>
<dcterms:isFormatOf xsi:type="dcterms:URI">http://www.theeuropeanlibrary.org</dcterms:isFormatOf>

```

```

<dc:contributor>Mr Smith's wife</dc:contributor>
<dc:rights>Free</dc:rights>
<dc:rights xsi:type="dcterms:URI">http://www.theeuropeanlibrary.org</dc:rights>
<dc:identifier xsi:type="dcterms:ISBN">xxxxxx</dc:identifier>
<dc:identifier xsi:type="tel:ISBN">xxxxxxx</dc:identifier>
<dc:identifier xsi:type="dcterms:ISSN">zzzzzz</dc:identifier>
<dc:identifier xsi:type="tel:ISSN">zzzzzz</dc:identifier>
<dc:identifier xsi:type="tel:OpenURL">xxxxxxx</dc:identifier>
<dc:identifier xsi:type="tel:DOI">123456789</dc:identifier>
<dc:identifier xsi:type="tel:URN">987654321</dc:identifier>
<tel:recordId xsi:type="tel :OAI">11:22:33:44:55</tel:recordId>
<dc:identifier>Id</dc:identifier>
<mods:location>The European Library Office</mods:location>
<dcterms:created>21 April 2007</dcterms:created>
<dcterms:created xsi:type="tel:ISO8601">2007-04-21</dcterms:created>
<dcterms:issued>22 April 2007</dcterms:issued>
<dcterms:issued xsi:type="tel:ISO8601">2007-04-22</dcterms:issued>
<dcterms:modified>23 April 2007</dcterms:modified>
<dcterms:modified xsi:type="tel:ISO8601">2007-04-23</dcterms:modified>
<dcterms:valid>24 April 2007</dcterms:valid>
<dcterms:valid xsi:type="tel:ISO8601">2007-04-24</dcterms:valid>
<dcterms:captured>1 April 2007</dcterms:captured>
<dcterms:captured xsi:type="tel:ISO8601">2007-04-1</dcterms:captured>
<dcterms:available>24 April 2007</dcterms:available>
<dcterms:available xsi:type="tel:ISO8601">2007-04-24</dcterms:available>
<dcterms:dateCopyrighted>2 April 2007</dcterms:dateCopyrighted>
<dcterms:dateCopyrighted xsi:type="tel:ISO8601">2007-04-2</dcterms:dateCopyrighted>
<dcterms:dateSubmitted>3 April 2007</dcterms:dateSubmitted>
<dcterms:dateSubmitted xsi:type="tel:ISO8601">2007-04-3</dcterms:dateSubmitted>
<dcterms:dateAccepted>3 April 2007</dcterms:dateAccepted>
<dcterms:dateAccepted xsi:type="tel:ISO8601">2007-04-3</dcterms:dateAccepted>
<dcterms:tableOfContents>xxxxxx</dcterms:tableOfContents>

```

```

<mods:edition>TEL Edition</mods:edition>
<tel:collectionType>xxxxxxx</tel:collectionType>
<dcterms:extent>21th century</dcterms:extent>
<dcterms:medium>xxxxxxx</dcterms:medium>
<dcterms:medium xsi:type="dcterms:IMT">xxxxxxx [IMT]</dcterms:medium>
<dc:bibliographicCitation xsi:type="tel:citation">yyyyyy</dc:bibliographicCitation>
<dc:source>Images book of Mr Smith</dc:source>
<dc:coverage></dc:coverage>
<dcterms:spatial>Europe</dcterms:spatial>
<dcterms:temporal>2006-12-31 to 2007-01-01</dcterms:temporal>
<dcterms:temporal xsi:type="dcterms:period">
  start=2006-12-31T23:29+10:00; end=2007-01-01T00:01+10:00; scheme=W3C-DTF;
</dcterms:temporal>
<dc:audience>Everyone</dc:audience>
<dcterms:abstract>None</dcterms:abstract>
<tel:recordSchema>TEL Application Profile</tel:recordSchema>
<tel:recordId>000000</tel:recordId>
<dc:relation>

```

This image is part of the images book belonging to Mr Smith. Details of the image are available as well and have their own description.

```

</dc:relation>
<tel:collectionType>None</tel:collectionType>
<cld:strength>None</cld:strength>
<cld:accessControl>None</cld:accessControl>
<cld:accrualStatus>None</cld:accrualStatus>
<cld:legalStatus>None</cld:legalStatus>
<cld:custodialHistory>None</cld:custodialHistory>
<cld:note>None</cld:note>
<cld:hasLocation xsi:type="dcterms:URI">None</cld:hasLocation>
<cld:objectName>None</cld:objectName>
<cld:accumulationDateRange>None</cld:accumulationDateRange>
<cld:contentsDateRange>None</cld:contentsDateRange>

```

```
<cld:owner>None</cld:owner>
<cld:hasDescription>None</cld:hasDescription>
<cld:hasAssociation>None</cld:hasAssociation>
<cld:hasPublication>None</cld:hasPublication>
<cld:accessConditions></cld:accessConditions>
<cld:isLocationOf xsi:type="dcterms:URI">None</cld:isLocationOf>
<cld:administrator xsi:type="dcterms:URI">None</cld:administrator>
<cld:seeAlso xsi:type="dcterms:URI">None</cld:seeAlso>
<cld:locator xsi:type="dcterms:URI">None</cld:locator>
</metadata>
</record>
```

Appendix 7: Logging requirements

The following tables describe the elements being logged with the TEL custom logging functionality.

Table 1: Logged values

Field name	Value	Description
userid	String	"guest": user not logged in
	Integer	Registered user id if user is registered and is logged in
userip	String	User IP address
sesid	String	JSESSIONID created on session-start
lang	String	Two letter language code - based on language view in portal
query	String	Query text
action	String	Depending on the action the user has performed, several action phrases are logged: See next table.
colid	String	Collection ID that action is performed on
		Full address of the search logged when a search is performed
nrRecords	Integer	Total number of retrieved records per collection
recordPosition	Integer	Position of viewed item in the total record list
sboxid	String	Identifier for remote searchboxes which query the portal via URL
objurl	String	URL of object being viewed. Relevant actions: available_at, see_online, (a URL to the remote object), view_full (URL of the record within the TEL portal)
date	Datetime	Timestamp yy-mm-dd hh:mm:ss

Table 2: Action vocabulary - Implemented

Action value	Description
search_sim	Search initiated from simple search form
search_adv	Search initiated from advanced search form
search_res	Search initiated from search form on the results page
view_brief	Short list display / Click on collection to navigate between results
view_full	Click on a brief record to view the full record
jump_to_page	In the result page, a user can enter a numerical value for skipping several pages of records
available_at	"Available at Library" link clicked to view record in native interface
see_online	"See online" link clicked to see object in native interface
page_brief	"next" or "previous" links clicked to page through brief record lists (10 per page)
col_set_country	Collections chosen from all collections tab (Collections listed by country)
col_set_subj	Collections chosen from subject list
col_set_desc	Collections chosen by searching by description
option_save_session_favorite	Session favorite saved
option_send_mail	Record sent by email
service_all	Full record service link used (TO TEST)

Table 3: Action vocabulary - NOT Implemented

Action value	Description	Reason
search_res_rec_any search_res_rec_all	Search initiated from within a full record view by clicking on search (magnifying glass) icon in the record's available fields	Not applicable for the moment
search_url	Search initiated from url query string. The String may also have a domain name attached to it (search_url_www.domain.com) if it is coming from a remote tel search - minitel (a marketing tool)	Will not be implemented - All searches now happens via the URL
col_set_theme	Collections chosen from theme list	Will not be implemented - See *
col_set_theme_country	Collections chosen from country list on home-page or result page	Will not be implemented - See *
col_set_default	Collections default list searched	Will not be implemented - See *
option_save_reference	Record saved for reference manager use	Not applicable for the moment
service_denmark	Full record service link used	Not applicable for the moment
service_hungary	Full record service link used	Not applicable for the moment
service_netherlands	Full record service link used	Not applicable for the moment
service_uk	Full record service link used	Not applicable for the moment
search_history view_full_fav	TODO?	Not implemented yet
show_help_helpfilename	"help" link clicked	Not implemented yet

Appendix 8: Constraints for EOD

The constraints used for the EOD link are as follow:

- For Portugal
 - **Year** must be as follow: (year>=1700 && year<=1850)
 - The record must NOT contain any element <dc:identifier xsi:type="dcterms:URI">
 - Their must be a special identifier included in the record. One of those listed here:
 - * Cota (Call-Number): BN-A.H.S.
 - * Cota (Call-Number): BN-E.M.
 - * Cota (Call-Number): BN-S.C.
 - * Cota (Call-Number): BN-B.
 - * Cota (Call-Number): BN-F.A.
 - * Cota (Call-Number): BN-B.A.
 - * Cota (Call-Number): BN-H.G.
 - * Cota (Call-Number): BN-VAR.
 - * Cota (Call-Number): BN-B.A.C.
 - * Cota (Call-Number): BN-L.
 - * Cota (Call-Number): BN-B.A.D.
 - * Cota (Call-Number): BN-L.E.
 - * Cota (Call-Number): BN-B.C.
 - * Cota (Call-Number): BN-L.P.
 - * Cota (Call-Number): BN-B.R.
 - * Cota (Call-Number): BN-N.
 - * Cota (Call-Number): BN-BIB.
 - * Cota (Call-Number): BN-P.
 - * Cota (Call-Number): BN-C.E.
 - * Cota (Call-Number): BN-R.
 - * Cota (Call-Number): BN-C.G.
 - * Cota (Call-Number): BN-S.A.
 - * Cota (Call-Number): BN-CIP