

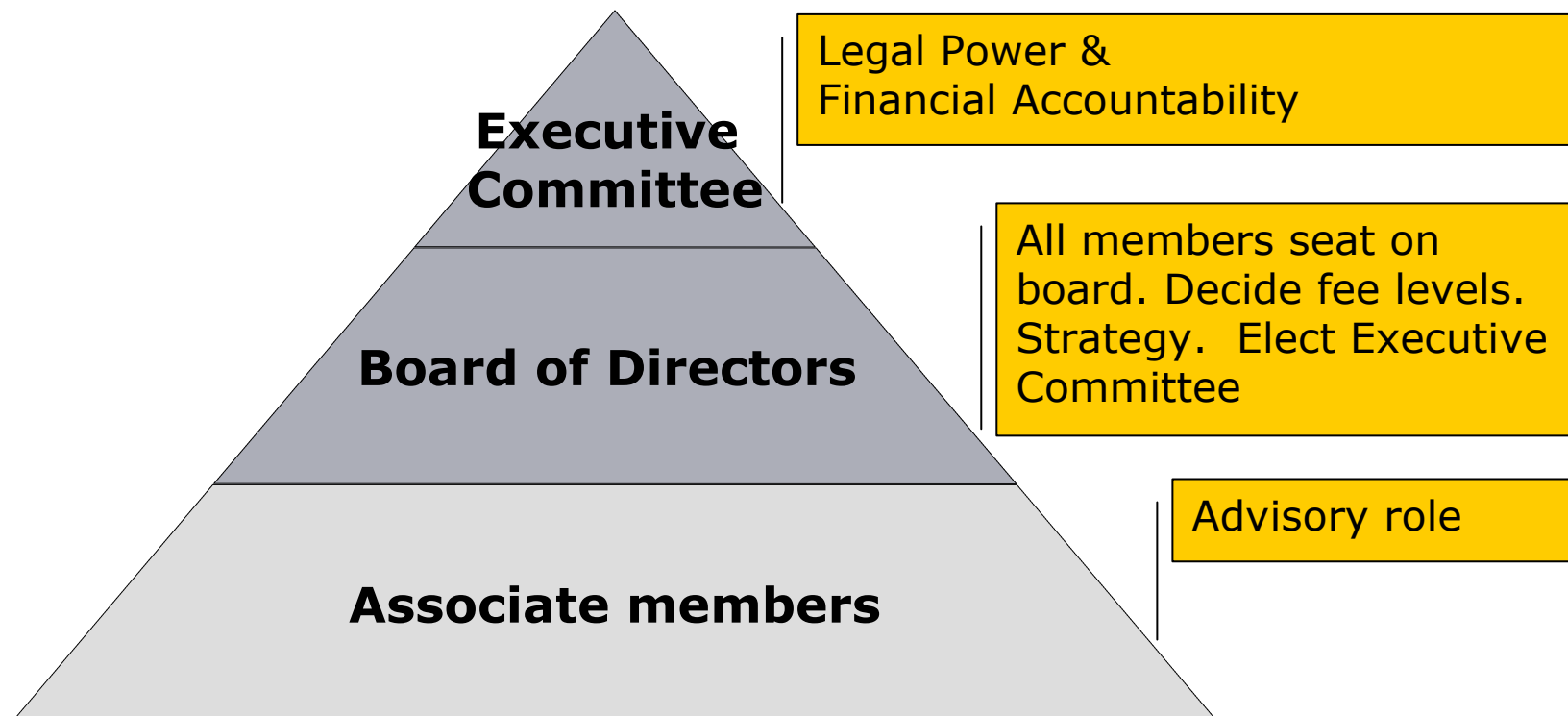
Purpose:

- to provide cross-domain access to Europe's cultural heritage.

So the Foundation will:

- facilitate formal agreement across Museums, Archives, Audiovisual Archives and Libraries on how to cooperate in the delivery and sustainability of a joint portal.
- provide a legal framework for use by the EU for funding purposes and as a springboard for future governance.

EDL Foundation: Foundation Structure



The EDL Foundation

Foundation Members can be:

- a. European Associations (legal entities) of Content Holders;
- b. National Associations (legal entities) of Content Holders;
- c. International Associations (legal entities) for the benefit of a European branch (non legal entity) of this association;
- d. relevant individual institutions (legal entities) for one of the Domains, and
- e. natural persons for the benefit of a relevant individual institution or association for one of the Domains, which is not a legal entity.

Pan European Association Board of Participants Executive Board

EURBICA	European Regional Branch of Intl. Council on Archives	Martine de Boisdeffre
FIAT	Intl. Fed. of Television Archives	Edwin van Huis
ACE	Association Cinémathèques Europeennes	Claudia Dillmann
EMF	European Museums Forum	Massimo Negri
CENL	Conference of European National Librarians	Elisabeth Niggemann
LIBER	Ligue des Bibliothèques Européennes de Recherche	Hans Geleijnse
MICHAEL	Multilingual Inventory of Cultural Heritage in Europe	Christophe Dessaux
KB	National Library of The Netherlands	Wim van Drimmelen
ICOM Europe	International Council of Museums Europe	
CERL	Consortium of European Research Libraries	
INA	Institut Audiovisuel, France	NEW November
BA	Bundesarchiv, Germany	2007

The EDL Foundation: Elected Officers

- Chair: Elisabeth Niggemann, CENL
- Vice Chair: Martine de Boisdeffre, EURBICA
- Secretary: Wim van Drimmelen, KB
- Treasurer: Edwin van Huis, FIAT